

# A World Class Home for Cambridge University Rowing

## *The Ely Boathouse*



*Building a Boathouse  
for the future of  
Cambridge lightweight  
rowing*



# A home to develop our talent

Every September, ambitious oarsmen and coxes contact the current CULRC President to inform him of their desire to trial for the Club. These athletes follow in your footsteps, the crews that have built a proud history of success in lightweight rowing. CULRC members are by nature dedicated, loyal, resilient and competitive: we all share a common bond – we wore light blue and wanted to win.

You made a choice then to be part of an elite club that was at the forefront of sporting performance and, although the kit and equipment might have changed, that same spirit and drive has not.

However, we now are trailing Oxford – not yet in terms of the crews that we are fielding in the race but in terms of facilities. In our view, we urgently need to close that gap or risk not being able to compete on equal terms. In order to give our crews the best chance of success we need a purpose-built boathouse and training base in Ely: a home where crew development can be supported by a dedicated coaching team.

If we can achieve this our crews will be training in the best boats, out of a great boathouse on a fabulous stretch of water





# Facilities help win races

*When you choose to become a part of this project you will be making a very real difference to the lives of the those who will be rowing for CULRC.*

*We all managed but imagine how good we could have been if only... Let's make the next generation as good as they can be...*

Winning races is about making improvements every day, maximising our talent with the right programme and right support. Facilities alone don't win races. However our current lack of any sort of boathouse, at Ely or on the Cam, paints a picture of a club that is run on a shoestring, without any permanency or support. We need our own facility that we can be proud of, that reflects the professionalism, talent and commitment of our athletes, coaches and support staff. Most importantly, it will help attract the best talent to compete against Oxford.

In the busy life of the scholar athlete, rest, recovery and resilience are key factors in performance improvement. In recent times they have changed in a car park and huddled in the open. Our new boathouse will allow the students to put their kit bags on a bench in the warm changing room and their books on a table in the study area. Before the outing while their coach talks to them, they will be able to hold a hot drink and watch a video of yesterday's outing yesterday. Once warmed up in the ergo room with space to stretch, boating will be efficient along a 48m long landing stage, eliminating

unproductive time. During the outing each oarsman will be able to focus on improving the small details of each stroke as he has recently reviewed on the video. The crew coaches can immediately increase their impact by recording the session for analysis. Between the outings the rowers will change into clean dry kit, have a second breakfast, whilst talking to coaches and watching the previous outing on the TV screen displays. Those that need to return to Cambridge for lectures will leave ready to start focusing on their books whilst other members prepare for a second session. Once the training session is over, each rower will be able to have a hot shower and change, helping to prevent injury and leaving them ready to tackle lectures and their study for the rest of the day.

After the end of term, the squad will be able to spend the day in Ely knowing that they will be able to study between sessions, saving vital hours. Recovery time is not compromised nor performance reduced on the water. With limited training days ahead of each boat race – making the best use of time is essential. This facility will enable us to maximise that precious time.

# Our goal

## To beat Oxford and provide the premier training programme for lightweight men

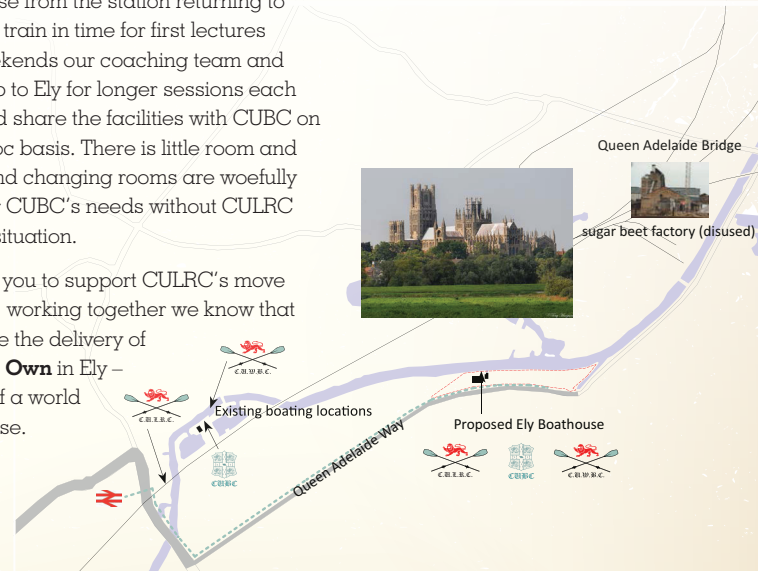
In recent years, CULRC has been training in Ely on the River Ouse. During this time the club has rented space within CUBC's part of the King's School Ely Boathouse and part of the car park at a local boatyard. With over 2,000 rowers training each morning on the River Cam, the river is often too congested for our training purposes. Our crews benefit from rowing on part of the Great Ouse from Ely. It is an unhindered waterway, which has not suffered during the recent periods of high rainfall levels and is almost invariably rowable. Our oarsmen can row side-by-side on a straight stretch, coached from launches from 15km without intrusion or the need to turn.

Ely already provides us with this fantastic stretch of water but our current facilities present us with a real challenge. Our current rented boathouse space is completely inadequate and cannot meet the requirements of any of the individual

clubs. Training for the Boat Race requires dedication: the students complete fourteen training sessions a week with land training now based at Caius Boathouse in Cambridge, or the University Sports Centre. The crews travel by train to Ely three or

four mornings each week and run for 15 minutes to the boathouse from the station returning to Cambridge by train in time for first lectures at 9am. At weekends our coaching team and squad decamp to Ely for longer sessions each day. Our squad share the facilities with CUBC on a largely ad hoc basis. There is little room and the showers and changing rooms are woefully inadequate for CUBC's needs without CULRC adding to the situation.

We are asking you to support CULRC's move into a new era, working together we know that we can achieve the delivery of a **Home of our Own** in Ely – the provision of a world class boat house.





# The current boathouse

“ *CULRC has delivered boat race winning crews, international medallists and Olympic oarsmen. It has achieved this in spite of its facilities. As the game moves on we need to ensure that we stay ahead of the competition.* ”

*Mark Aldred, CULRC '08 & '09, Winner Wýfolds '11, World Bronze Medallist '13, European Silver Medallist '14.*

We have no permanent home in Ely. That applies to CUBC and CUWRC too. CUBC and CUWBC have been based on the King's School Ely site in cramped and inadequate conditions, which we can, on occasion, share. The school wishes to redevelop the site, as their school programme has expanded. There will be no room for any of the University clubs. We urgently need to fill the void.

Our rivals in the Boat Race, OULRC are based in a lavish, purpose-built facility that gives them a distinct advantage in training and recruitment. We know that a high-quality facility would provide Cambridge University rowing with the best ability to prepare the ambitious athletes who arrive to trial. We also want to be able to attract the very best scholar athletes in the world on a level playing field. With these

oarsmen and women rowing for Cambridge, we want to put Cambridge back on top.

A high performance environment is essential to the students of Cambridge not only in the pursuit of excellence on and off the water but in showing the world that we are serious about creating a world-class centre of excellence in rowing.

CULRC has a proud history. We have long been the poor relation, working wonders with very little. We have moved forward from that and now have the equipment and coaching that we need. Nevertheless this is an opportunity to secure a future for the club as partners in a world-class facility. Imagine what we can achieve then!

*CULRC has had remarkable success in its life. We have won 24 of the 40 races and four of the last six. We have been instrumental in launching the careers of international oarsmen. However, that record is potentially at risk if we cannot attract and develop our athletes. Today the facilities are inadequate. With the proposed boathouse, we will have a world class facility which will serve our crews for generations to come.*

# Vision of the new boathouse

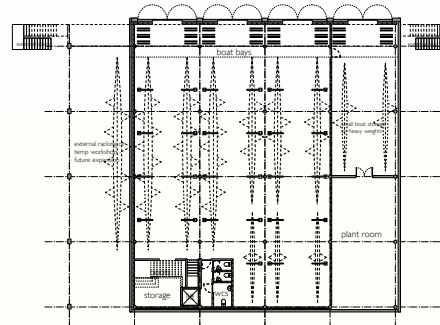
There are two phases of this project

## The Core Design:

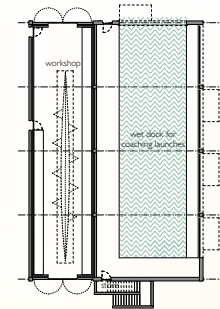
- A dry boathouse with four boat bays
- A wet dock for secure storage for coaching launches
- 48m landing stage allowing efficient boating
- Ergo area
- Two large changing rooms
- A kitchen – allowing crews to be fed between sessions
- Crew rest and study area with WiFi
- Crew meeting and physio rooms

## The additional facilities:

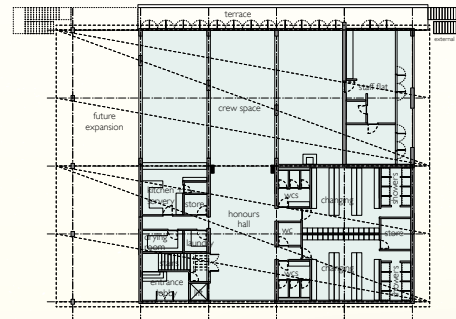
- Fifth boat bay
- Four crew dormitories – to allow crews greater flexibility around training times
- A workshop to repair boats
- Staff accommodation
- Weight training room
- Wet boathouse



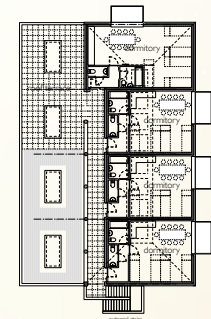
3.5 bays 26m deep	boat bays	515 sq m
total capacity (assumes 5 boats high + 6 for II and I)	boat room + storage	19 sq m
15 x VII	wcs	7 sq m
15 x VIII	plant room	72 sq m
12 x II		
18 x I		



workshop	126 sq m
wet dock (6 launches)	228 sq m
storage	3 sq m



crew room + warm up space	216 sq m
honours hall	72 sq m
kitchen + sensory	20 sq m
laundry + drying room	10 sq m
changing, wcs + showers	129 sq m
stores	14 sq m
staff flat	51 sq m



1 x dormitory (10 beds)	54 sq m
3 x dormitory (8 beds)	44 sq m

# Making the vision a reality

“ CULRC has delivered boat race winning international medallists and Olympic oarsmen, despite having very limited resources. World class facilities will help the club attract the best lightweight talent and reach new levels of performance. ”

Tom Middleton, CULRC  
1996, Olympian GBR LM2x,  
Sydney.



A practical, well designed boathouse will provide excellent training facilities, incorporating boat and equipment storage, wet storage for launches, weights and ergo areas, changing rooms, kitchen and dining facilities, treatment and meeting rooms and a study area.

The scholar athletes of CULRC need this facility to ensure that they can manage the demands of the intense training programme required to

compete at the modern Boat Race. We want all our crews to beat Oxford.

CULRC is working alongside CUBC and CUWBC to make this vision a reality.





# The Project Ely Group

In this new era of Cambridge University Rowing, CULRC is working closely with CUBC and CUWBC to deliver this transformational facility for the next generation of your club members. CULRC plays an integral role on the Project Ely Group. It is this group which has been tasked with delivery of the project. Working in collaboration the group has achieved the following:

## By July 2012

- Fore Mill Wash site purchased
- Jeremy Bailey Architects with Baynes & Mitchell Architects were selected after submissions from 12 firms

## By December 2012

- Professional Teams finalised – Quantity surveyors; Mechanical & electrical engineers; Highway consultants; Ecology consultants

## By July 2013

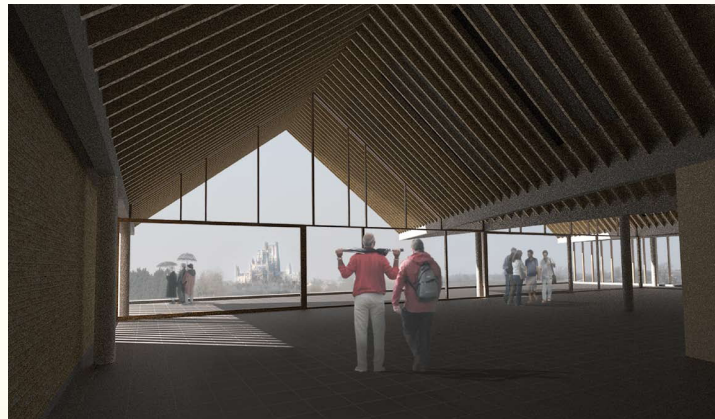
- Conditional planning consent granted
- Project Manager appointed

## By December 2013

- Planning conditions finalised
- Tenders sought for initial ground works received and agreed
- Vice Chancellor commits significant sum in support of the project

## January 2014

- Contractor engaged for Ground Works





# We need your financial support

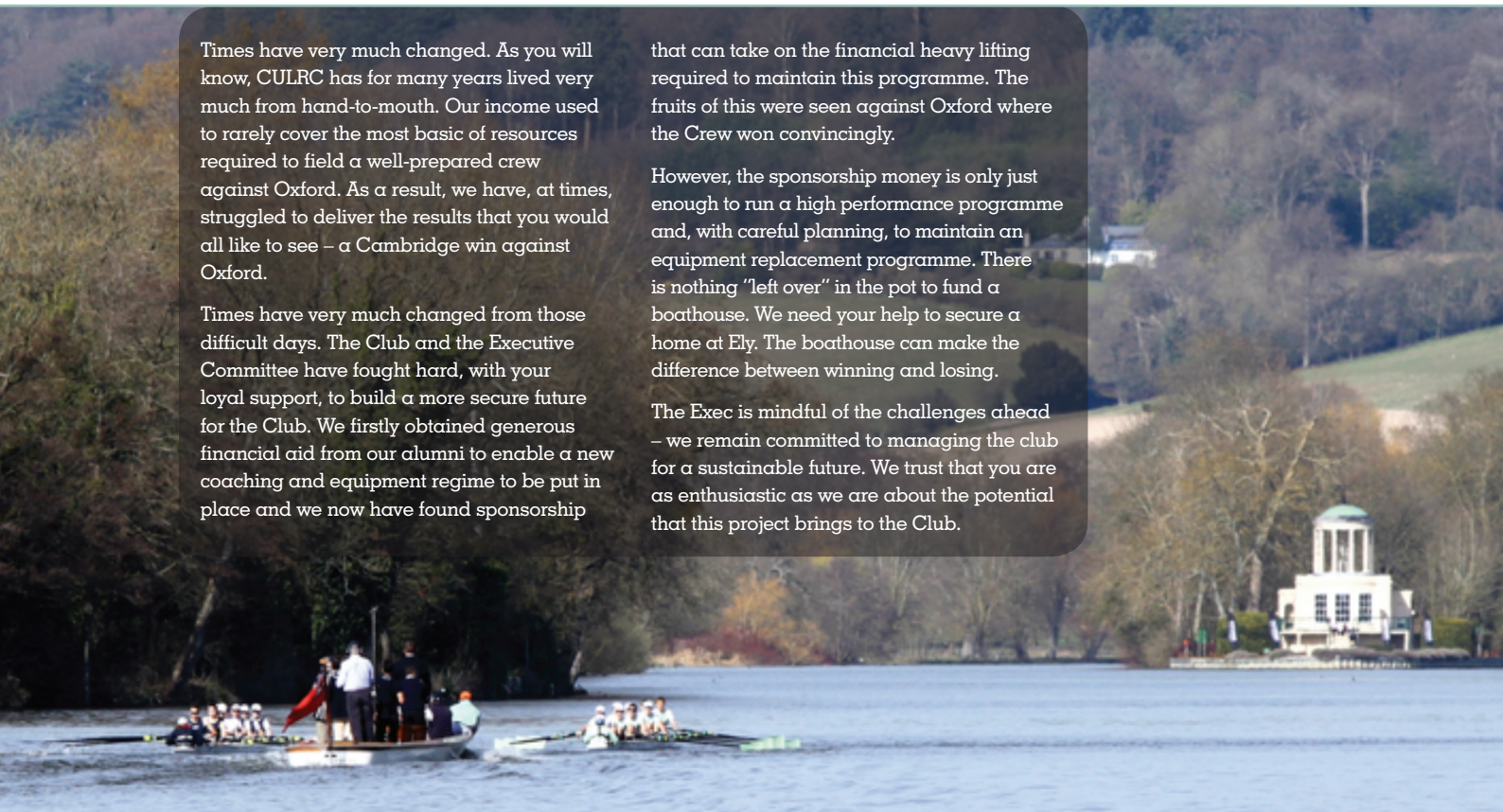
Times have very much changed. As you will know, CULRC has for many years lived very much from hand-to-mouth. Our income used to rarely cover the most basic of resources required to field a well-prepared crew against Oxford. As a result, we have, at times, struggled to deliver the results that you would all like to see – a Cambridge win against Oxford.

Times have very much changed from those difficult days. The Club and the Executive Committee have fought hard, with your loyal support, to build a more secure future for the Club. We firstly obtained generous financial aid from our alumni to enable a new coaching and equipment regime to be put in place and we now have found sponsorship

that can take on the financial heavy lifting required to maintain this programme. The fruits of this were seen against Oxford where the Crew won convincingly.

However, the sponsorship money is only just enough to run a high performance programme and, with careful planning, to maintain an equipment replacement programme. There is nothing “left over” in the pot to fund a boathouse. We need your help to secure a home at Ely. The boathouse can make the difference between winning and losing.

The Exec is mindful of the challenges ahead – we remain committed to managing the club for a sustainable future. We trust that you are as enthusiastic as we are about the potential that this project brings to the Club.





# Become a part of this project

“ Rowing is the ultimate team sport - you can only be as good as your weakest link. Furthermore, even the strongest person needs to know that everyone else is pulling as hard as they can. We all now need to pull together to ensure the success of this project. ”

**To find out how YOU can help call Julie Hogg on 07710 257691 or email [julie.hogg@culrc.org](mailto:julie.hogg@culrc.org)**

One thing is certain – we can rely on no one but ourselves and the other clubs to raise this money. It is a huge task – so few people row in any one year. We would like CULRC to have the highest participation rate of any club. In particular, we would be proud to be able to say ALL of our alumni have contributed to this exciting venture. What a statement to be able to make.

However, even if we achieve this, the task is still huge. We need to find £500,000. We have secured over £200,000 from a small but generous group including over £100,000 from the Exec – our thanks goes out to them. However, we have many student members and recent graduates who will not be able to contribute substantial sums. We need everyone to pull together to get us over the line – and that will include a larger group in the “engine room”, pulling more than their weight.

## Your contribution

We are heading down the course and are now asking you to help make this a victory.

We know each alumnus/a has different circumstances; we are asking you to help however you can, supporting the student athletes of the next generation.

The structure of the Ely boathouse operation will be such that each Club (CULRC, CUBC, CUWBC) will have an equitable stake in its operation independent of contribution level. However, CULRC, CUBC, CUWBC will only be able to build the boathouse if we all contribute to raising the £4.3m million project cost. Reaching our target means we will have earned our seat.

We can take contributions over time – some of our donations are spread over five years.

We have fielded 39 crews against Oxford and another 10 Granta Boats. Our contribution equates to each crew raising £10k-£15k. Could you help us to raise this from your crew?

*Each crew member giving £20 per month for 5 years – adding on gift aid – would beat our target. Some will not be able to give that, others will have to carry the weight.*

*“CULRC has risen to many challenges over the last four decades. When it does so, it usually succeeds – we are driven and dedicated. The Club faces a huge challenge ahead. The competition is better funded and better resourced than we are. However, we have the opportunity to take a huge leap ahead with this project.*

*We have built an enviable record of success both in the Race and in international rowing – a CULRC alumnus has participated in every Olympics since lightweight rowing was introduced. Ultimately, we can build on this not only to beat Oxford consistently but be regarded as a global centre of excellence for lightweight rowing.”*

*Bob Greatorox: CULRC '75 & '76 and iconic CULRC Head Coach.*



For more information contact:

Julie Hogg T: 07710 257691 E: [julie.hogg@culrc.org](mailto:julie.hogg@culrc.org)

Cambridge University Lightweight Rowing Club  
Goldie Boathouse, Kimberley Road, Cambridge, CB4 1HG [www.culrc.org.uk](http://www.culrc.org.uk)